

O R S E N S O



LinPaK-40

IP67 free Standing floodlight

# LinPaK-40

IP67 free Standing floodlight

Entry-level floodlight, best light quality and light output, excellent light distribution; All in a simple neat luminaire.

**LinPaK-40** is a mid range floodlight only 492 mm long and holds 24 high power high CRI LED chips, delivering 6300lm. With variation of selected optics NS/WS/OV and special barndoors it is the perfect solution for any outdoor installation, like Small trees, walls, facades. and also any indoor application like museums, visiting centers, hospitality, or every place that needs special attention with the best quality of light.

In addition **LinPaK-40** offers variety of finishes. Any chosen RAL color can be ordered to complete its beautiful look.\*

The **LinPaK-40** comes with ventilated cable gland that prevents condensation and internal pressure on the gaskets. Its heat sink is designed for high heat dissipation to ensure safe and long operation use.

**LinPaK-40** comes with Fixed Barndoors and a stainless steel bracket that can be attached to any flat surface or with a ORSENZO's spike\* for any landscape lighting applications.

## Features:

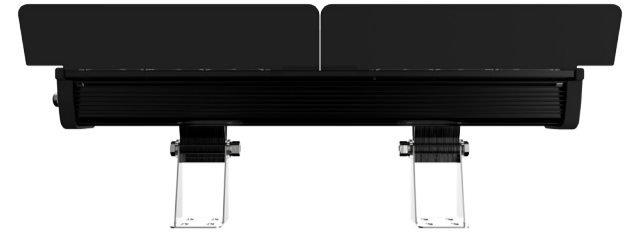
- Up to 6300 lumens
- 48W
- 230V
- NS/WS/OV beam angles
- High CRI 82 (92 available)
- IP67
- Stainless steel bracket
- Fixed Barndoors / Skirt\* / spike\* / Honeycomb\*
- Ventilated cable gland
- Guaranteed long life time and high performance
- Perfect for Indoor & Outdoor installations



\* additional cost

# LinPaK-40

IP67 free Standing floodlight



## TECHSPEC

### Output

Type of LEDs	24 x OSRAM High-power
Color Temperature (K)	2700 / 3000 / 4000 / 5000
Luminous flux (lm)	5900 / 5900 / 6000 / 6300 lm
CRI	82 typ / 92 available
Optics	High precision optical grade PMMA
Beam angle	NS (12°) / WS (56°) / OV (110+29°)
Efficiency (lm/w)	125 / 125 / 128 / 133

### Electrical

LED power (W)	48W
Current(mA)	700mA Constant Current
Fixture Input Voltage	230 VAC
Driver	Internal (Meanwell)
Input cable	1.0m Harsh environment 3x1mm

### Environmental

Operating Temp.	-20°C ~ 40°C / -4°F ~ 104°F
Projected lifetime	L70 over 50,000
Environment	Dry, Damp or Wet Locations, 0-99% humidity
Degree of protection (IP)	67
Impact resistance(IK)	06

### Physical

Fixture housing	Aluminum 6063
Bracket	Stainless steel
Front cover	PMMA UV protected
End cup	30%GF filled nylon
Fasteners	Stainless steel
Coating	Anodize 15μ
Height	66 mm
Width	81 mm
Length	492 mm
Cable gland	Nickel plated brass
Fixture Weight	1885 gr

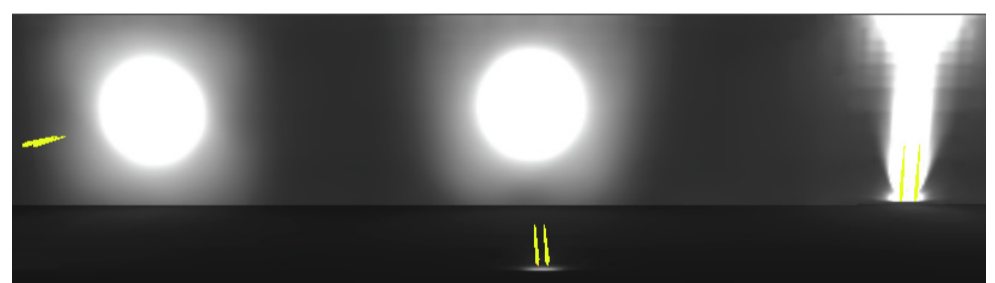
without  
barndoors & bracket



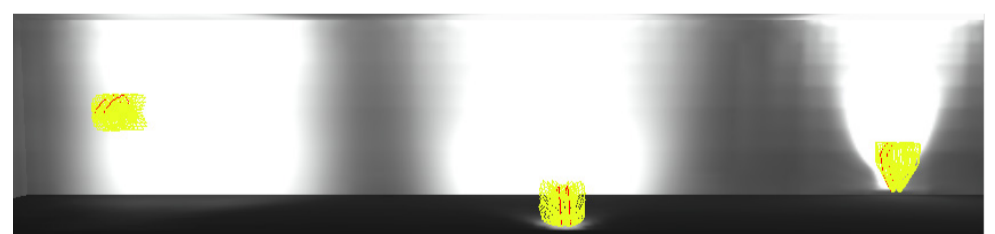
\* additional cost

## PHOTOMETRICS

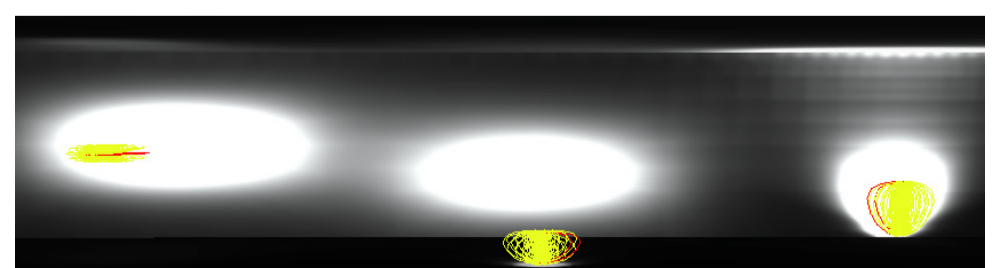
12 degree



56 degree



110+29 degree



\* For net lumens subtract 7% from above numbers.

All testings were made at T=85°

## DIMENSIONS

