

ORSENSO



LINSENS IP-100

IP 67 LINEAR OPTIC PROFILE

LINSENS IP-100

IP67

Linear optic profile

Unique combination of selected LED chips with high and precise optics , designed especially for outdoor illumination of walls and passages.

LINSENS IP-100 is an entry-level outdoor linear profile for budgetary projects.

LINSENS IP-100 holds 2 different optic systems - asymmetrical for wall grazing/washing and symmetrical for passages and halls. There are 4 options that gives enormous freedom in designing the lighting scene.

One fixture covers 250-300cm wide and 400-500cm high ,

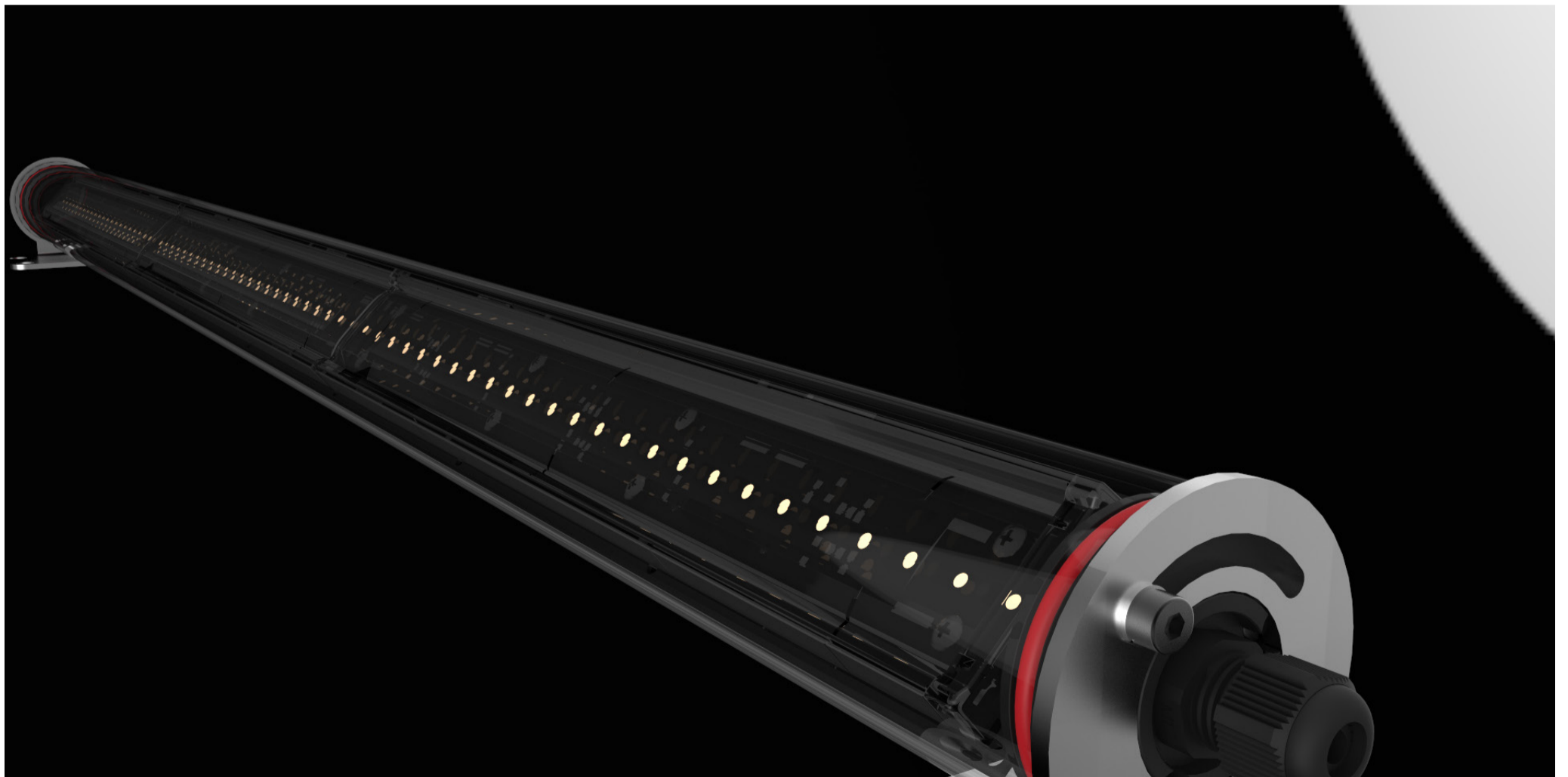
The LINSENS IP-100 heat sink is designed for high dissipation of the heat to ensure safe and long operation use. The cover is made from optical grade polycarbonate with 93% efficiency.

LINSENS IP-100 is protected against water and dust and holds an Ingress Protection of IP67 and impact resistance of IK08.

LINSENS IP-100 has a Custom-designed mounting bracket for adjusting the tilt up to 50° each way.

Features:

- 5990 lumens @5000K CRI90*
- 4 types of lenses including Asymmetrical oval beam
- Input - external Constant Current driver
or
24Vdc with Internal driver
- IP67 IK08
- High CRI >90**
- Homogenous light output
- Guaranteed long life time and high performance
- Adjustable bracket
- Protected against short circuit, wrong wiring, Reverse polarity, High temperature.



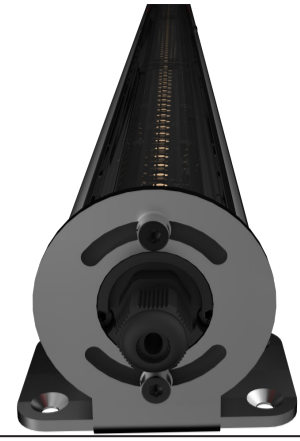
* For net lumens Tj=85° subtract 36% from above numbers.

**CRI 82 (min) also available

LINSENS IP-100

IP67

Linear optic profile



TECHSPEC

Output

Number Of LEDs	72
Type of LEDs	OSRAM/LUMILEDS CRI 90 (min)**
Color Temperature (K)	2000/2200/2700/3000/4000/5000
Luminous flux (lm)	3341/3550/3800/4594/5220/5990*
Optics	High precision optical grade PMMA
Beam angle	Wallgrazing/60/90/Asymmetrical
Luminous efficacy(lm/w)	128 lm/w @3000K CRI90

Environmental

Operating Temp.	-20°C ~ 40°C / -4°F ~ 104°F
Projected lifetime	L70 over 50,000
Environment	Dry, Damp or Wet Locations, 0-100% humidity
Degree of protection (IP)	67
Impact resistance(IK)	08

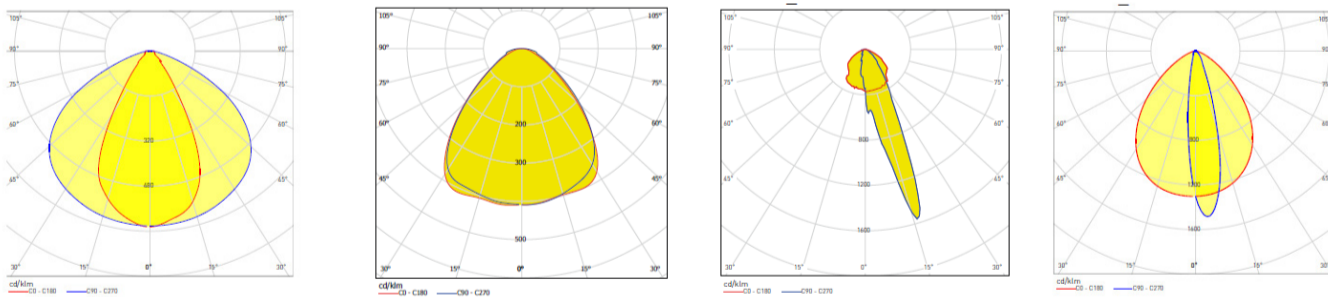
Electrical

LED power (W)	36W	
Driver	External	Internal
Current	Constant current	Constant voltage
Fixture Input Voltage	WW 1.5A 24V	24Vdc (dimming option on request)
	CW 3A 12V	
Input cable	2m IP rated cable	

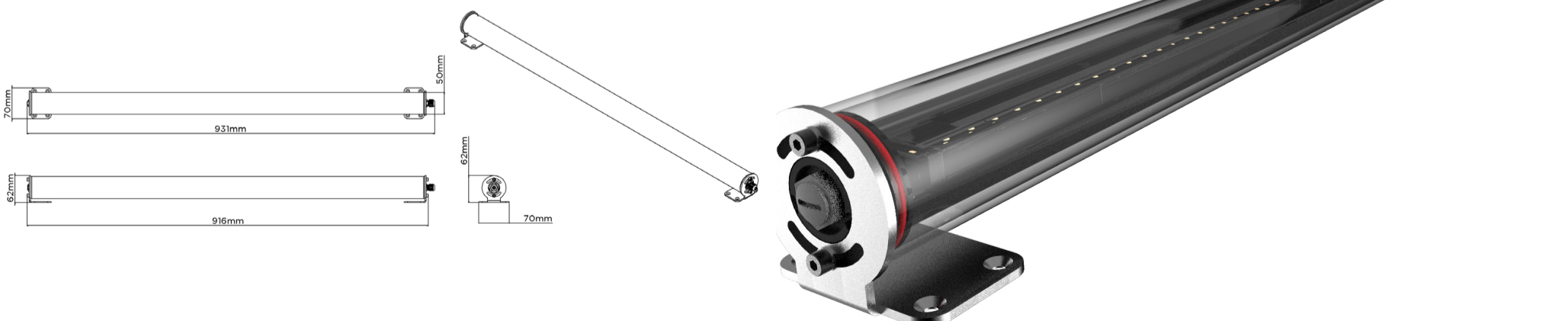
Physical

Housing	15µ Anodized 6061 Aluminum
Bracket	stainless steel 304
Cover	Optical grade Polycarbonate
Fasteners	Stainless steel 304
Length	931 mm
Width	50mm (70mm incl. bracket)
Height	62 mm (incl. bracket)
Fixture Weight	1296 gr

Light distribution



DIMENSIONS



* For net lumens Tj=85° subtract 36% from above numbers.

**CRI 82 (min) also available