

ORSENSO



LUKA-AR

IP67 Adjustable Recessed Spot

LUKA-A_R

IP67 Adjustable recessed spot

When good is not good enough - Extraordinary light quality, best light output, excellent light distribution; All in a beautifully designed yet simple luminaire.

LUKA-A is small but mighty it is only Ø36mm wide but it holds a LUMILEDS high power 880lm high CRI 92 LED chip. With variation of selected optics NS/SP/WS and a dark light design it is the perfect solution for museums, visiting centers, hospitality, or every place that needs special attention with fine design and the best quality of light.

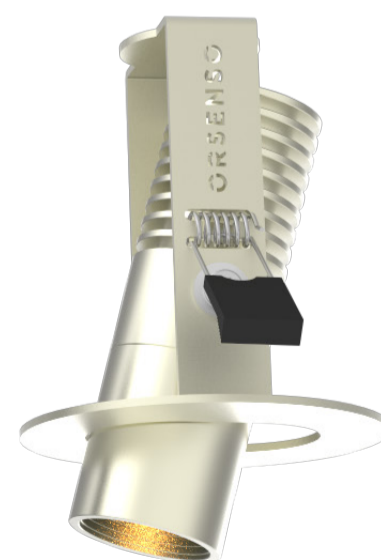
In addition **LUKA-A** offers variety of finishes. Any chosen RAL color can be ordered to complete its beautiful look.

The **LUKA-A** heat sink is designed for high dissipation of the heat to ensure safe and long operation use.

LUKA-A is adjustable, it has a custom-designed mounting housing that allows adjustable tilt of up to 10° each way. The special metal springs holds it tight in wood or plaster installations.

Features:

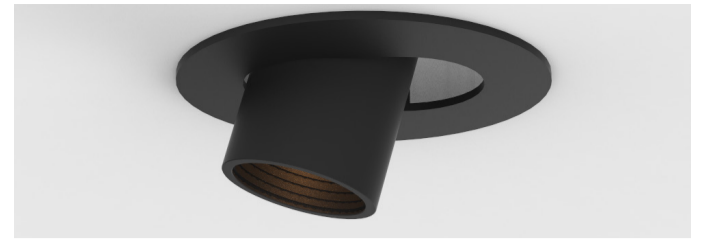
- Up to 880 lumens
- Only 8.4W
- NS/SP/WS beam angles
- High CRI 92
- IP67
- Adjustable tilt 10° each way
- Guaranteed long life time and high performance
- Perfect for Museums / Visiting centers / Hospitality / Home Interior lighting / Outdoor installations



* with additional charge

LUKA-AR

IP67 Adjustable recessed spot



TECHSPEC

Output

Type of LEDs	LUMILEDS High-power
Color Temperature (K)	2700 / 3000 / 5000 (5700)
Luminous flux (lm)	800(660)/ 850(736)/ 920(880)
CRI	82 (CRI 92 available)
Optics	High precision optical grade PC
Beam angle	NS 21° / SP 29° / WS 63°
Efficiency (lm/w)	95(79) / 101(88) / 110(105)

Electrical

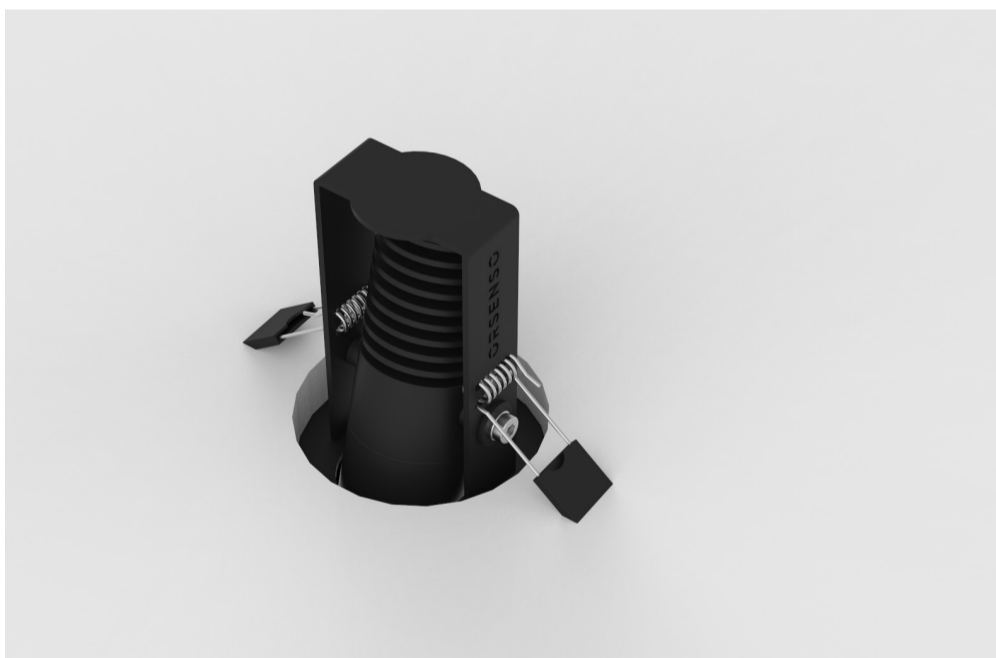
LED power (W)	8.4W
Current(mA)	700mA Constant Current
Fixture Input Voltage	Low voltage from Ex driver
Driver	External, not included
Input cable	1.0m IP rated cable

Environmental

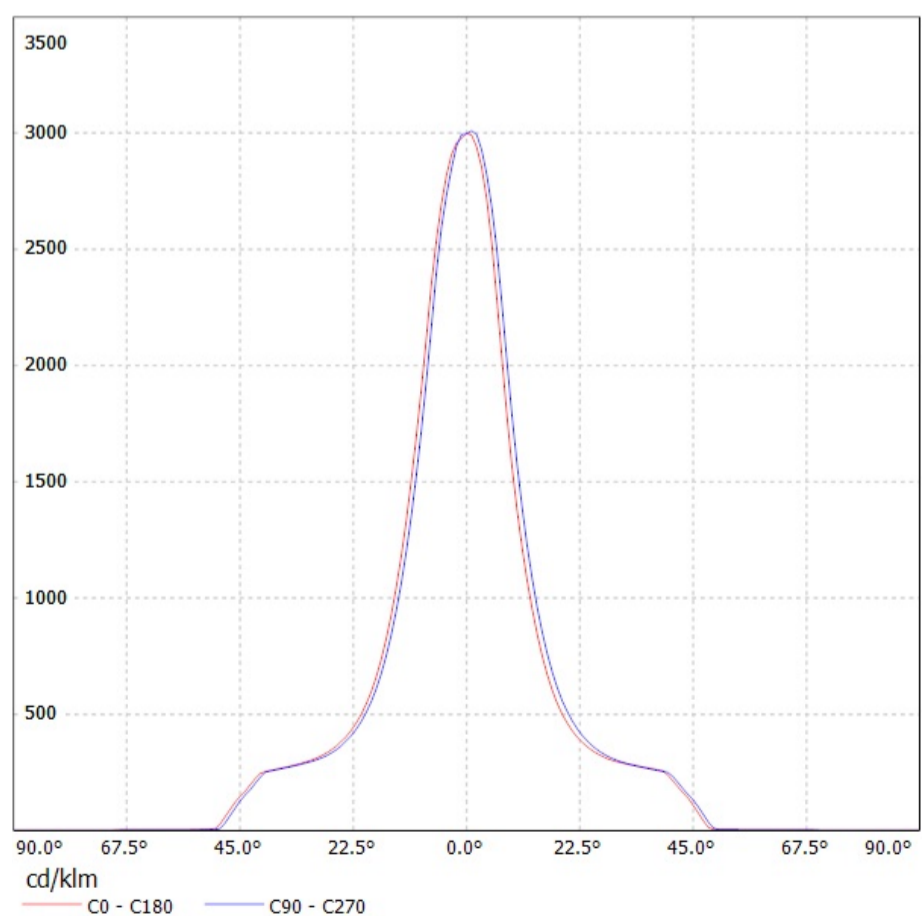
Operating Temp.	-20°C ~ 40°C / -4°F ~ 104°F
Projected lifetime	L70 over 50,000
Environment	Dry, Damp or Wet Locations, 0-99% humidity
Degree of protection (IP)	67
Impact resistance(IK)	09

Physical

Fixture housing	Aluminum 6063 / SST 316
Skirt housing	SST 316 / Steel
Front cover	Tempered front glass /Opt PMMA
Fasteners	Stainless steel 304
Coating	Alodine 15μ+ 80μ powder coating
Spring	Stainless steel 304
Depth	100.2 mm
Cut out	75 mm
Diameter	Spot 36 mm / Skirt 90 mm
Cable gland	Nickel plated brass
Fixture Weight	251 gr



PHOTOMETRICS



* Tested @ 250mA with 21° optics

* For net lumens subtract 10% from above numbers.

All testings were made at T=85°

DIMENSIONS

