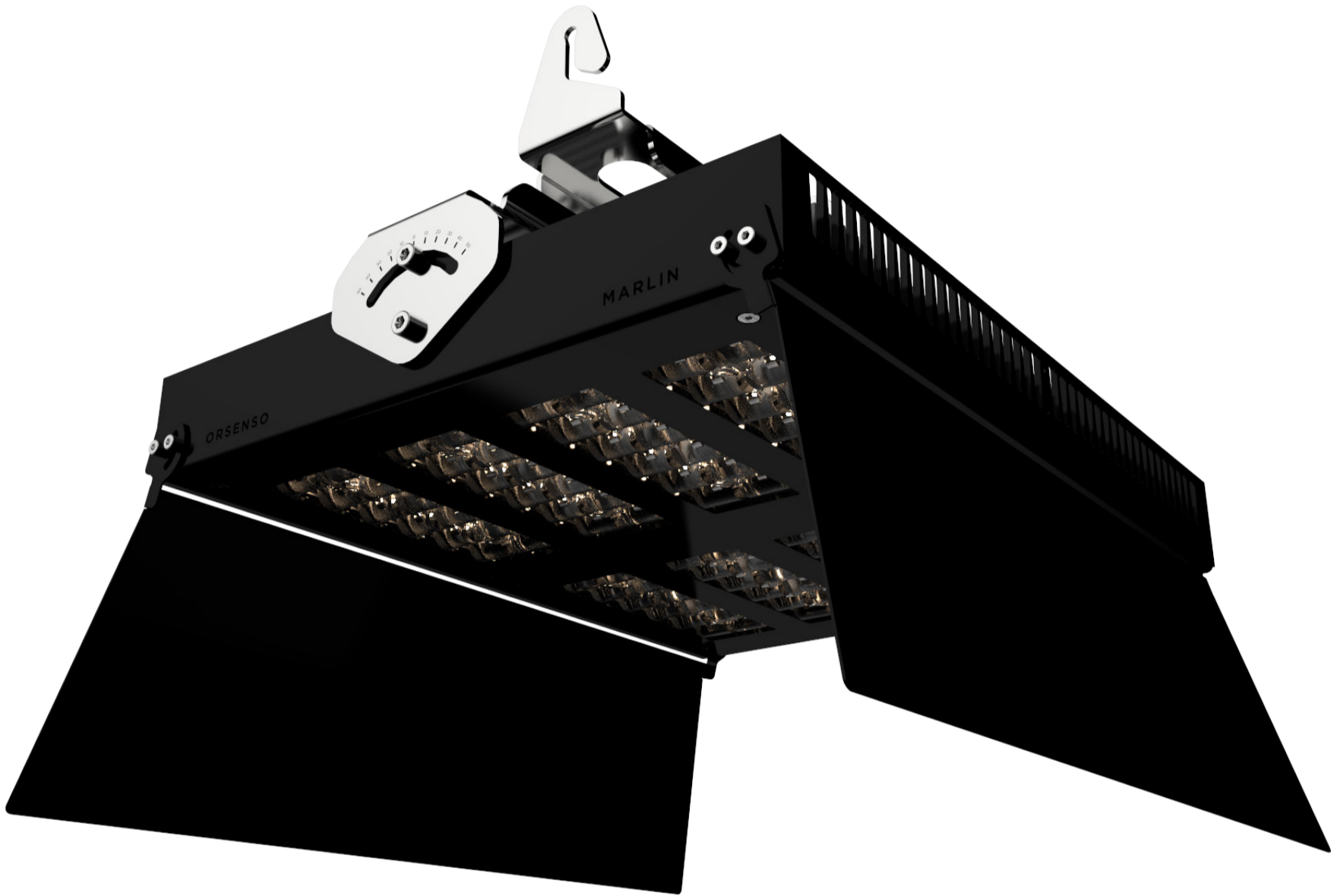




ORSENSO



MARLIN 270
IP67 Aqua light fixture

MARLIN 270

IP67 Aqua light fixture

High performance, high power, high intensity, highly saturated light, designed to light large Aquarium Tanks

MARLIN holds a unique combination of High Power LEDs that allows it to reach the high color temperature needed to light large scale aquarium tanks.

The wide spectrum and vivid colors are achieved by using unique combination of 5 different types of LEDs

The heat sink is designed for high dissipation of the heat to ensure safe and long operation use.

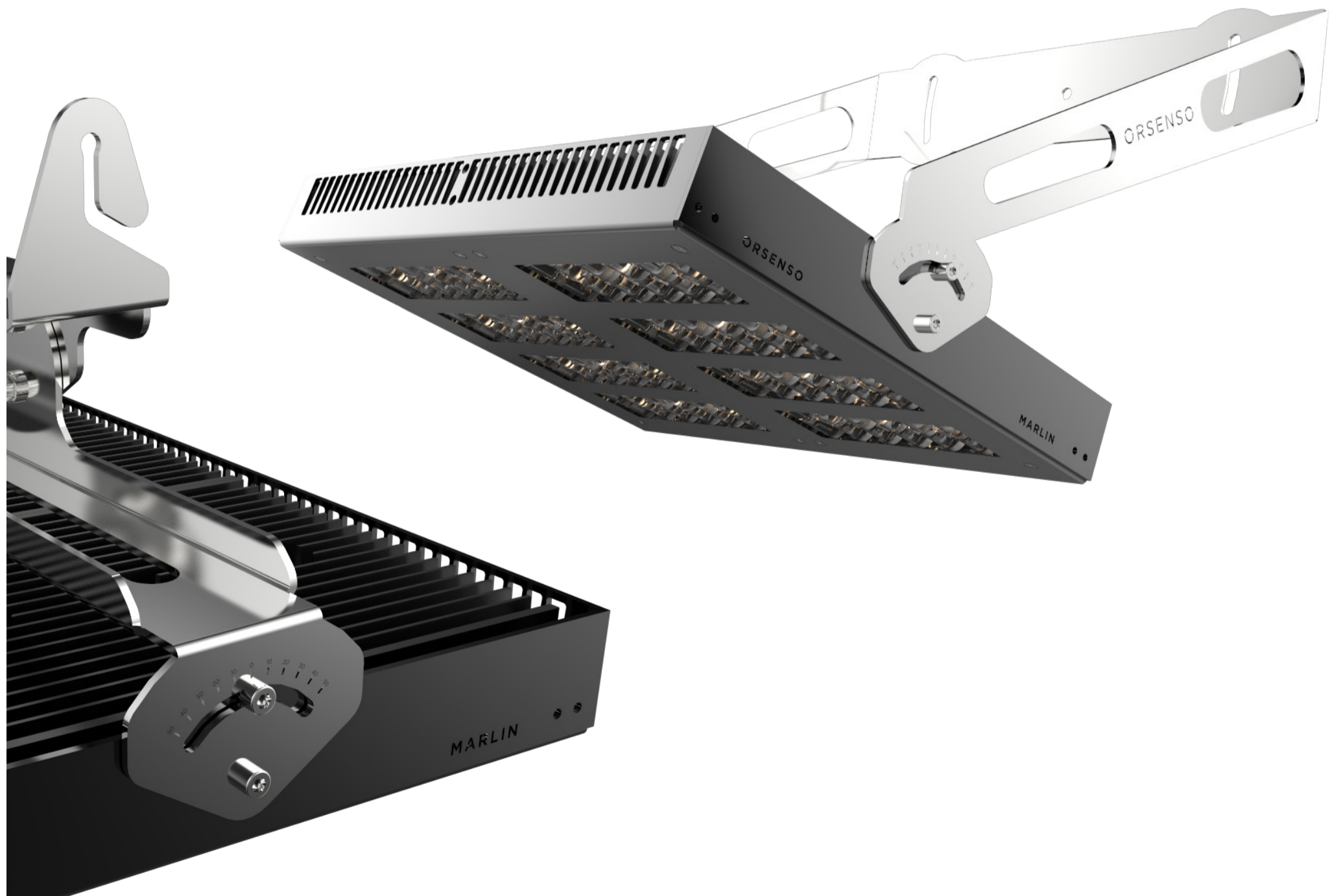
MARLIN special PMMA lens is not only 94% efficient, it is also suitable for outdoor use with respect to exposure to UV light and Water Exposure in accordance with UL 746C.

MARLIN has a Custom-designed Yoke-style mounting bracket for adjusting tilt and pan.

Adjustable color temperature and adjustable dimming levels manually or programmable via proprietary controller(optional)

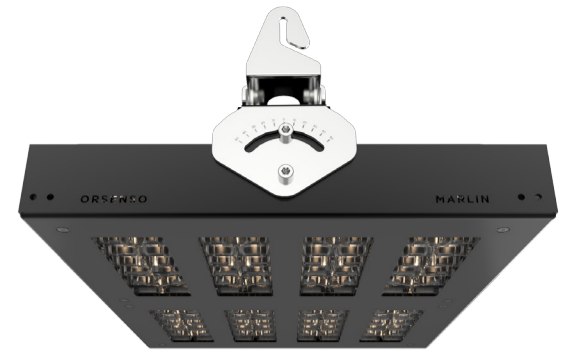
Features:

- Wide Spectrum for better growth, color and health
- Various color temperatures
- 5 different types of LEDs
- 4 different types of lenses
- Special UV/Violet LEDs enhances the fluorescence in areas where blue LEDs fail to do
- Power consumption: 270W
- Remote driver for better longevity
- Adjustable Pan & Tilt
- IP67
- 24V DC
- Homogenous light output
- Guaranteed long life time and high performance
- Custom made Barndoors (optional)
- Dimmer control (optional)



MARLIN 270

IP67 Aqua light fixture



TECHSPEC

Output

Number Of LEDs	96
Type of LEDs	Mix of White/Blue/Royal Blue/UV/ Violet (depends on type B/S)
Color Temperature (K)	6,500 / 10,000 / 14,000
Luminous flux (lm)	20,562 / 16,316 / 12,286 Net
Type of LEDs	Mix of HP OSRAM / LUMINUS
Optics	High precision optical grade PMMA
Beam angle	Spot/Medium/Wide/Oval
Efficiency (%)	94

Electrical

Lamp power (W)	270W
Main voltage	110-277VAC (to Driver)
Fixture Input Voltage	24V DC
Control	N.O. (Normaly ON)
Driver	External IP67 (fan-less)
Rise time	< 1 sec
Input cable	20m IP rated neoprene H07RN-F

Environmental

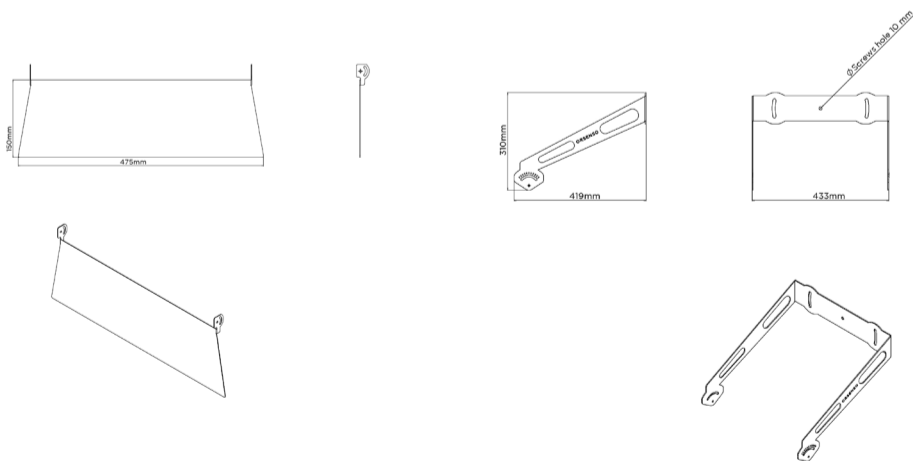
Operating Temp.	-20°C ~ 40°C / -4°F ~ 104°F
Projected lifetime	L70 over 50,000
Environment	Dry, Damp or Wet Locations, 0-100% humidity
Degree of protection (IP)	67

Physical

Housing	15µ Anodized marine grade Aluminum
Bracket	Passivated SAE 304 Stainless- steel
Fasteners	Passivated SAE 304 Stainless- steel
Length	342 mm
Width	426 mm
Height	222 mm (including bracket)
Fixture Weight	11 kg

ACCESSORIES

DIMENSIONS



Barndoors*

Special wall bracket

* Optional, to be purchased separately

