

# TUNE - 48

## Product datasheet

Best solution for tunable white applications.

**TUNE - 48** is a fully integrated solution optimized for lighting applications requiring tunable white LED linear arrays mounted on a rigid and thermally conductive Metal Core PCB. Combined with LUMILEDS and OSRAM the integrated unit provides Wide range of CCT and very easy connection, implementation and assembly.

The **TUNE - 48** combines 2 channels:

1 CH WW - 24 pieces OSRAM WW 2200K LEDs

2 CH CW - 24 pieces of LUMILEDS CW 6500K LEDs

Both LEDs are CRI 90 (min) as normal. This wide range of CCT delivers up to 4588 lumens\*

and with efficacy of up to 167 lm/w\* @ typical CRI 95.

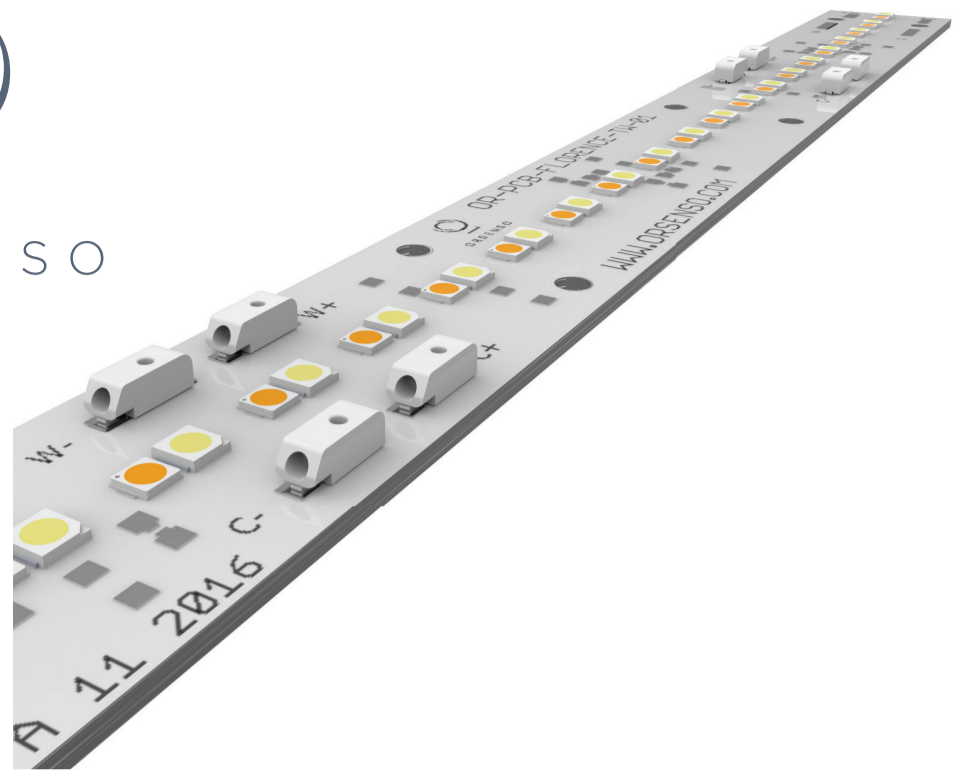
The mechanical design of the **TUNE - 48** aligns especially with Florence Ledil lenses so it is easy to build your own solutions based on off-the-shelf optics.

**TUNE - 48** is also perfect to use inside regular off-the-shelf standard aluminum profiles, we recommend using a minimum .... Wide & .... Height with opal or semi clear diffuser.

The **TUNE - 48** would be also the right choice when superior cove lighting is needed, just attached it to the appropriate heat-sink according to the expected watts being used.

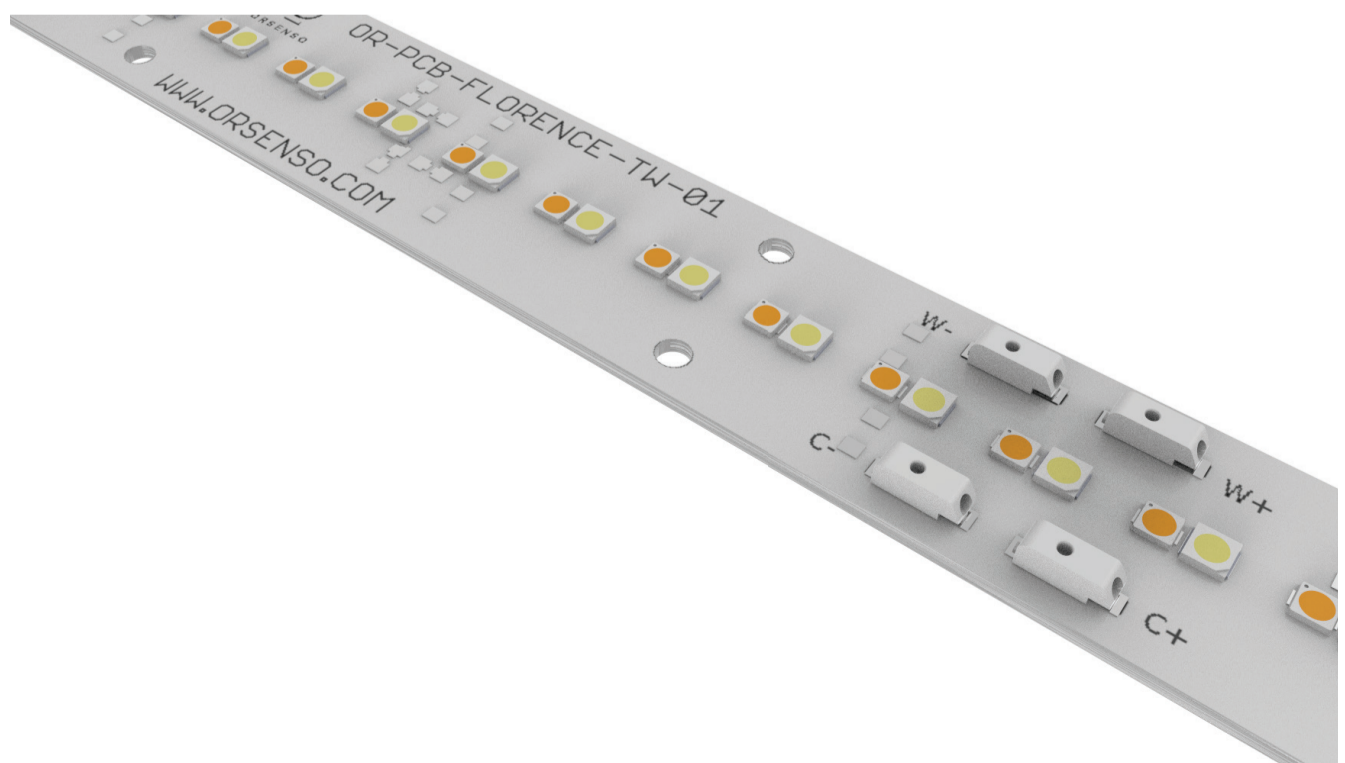
## Primary applications

- Cove lighting
- Wall washing/grazing (with Ledil optics)
- Linear lighting inside aluminum profiles
- Indoor area lighting
- Light boxes



## Features:

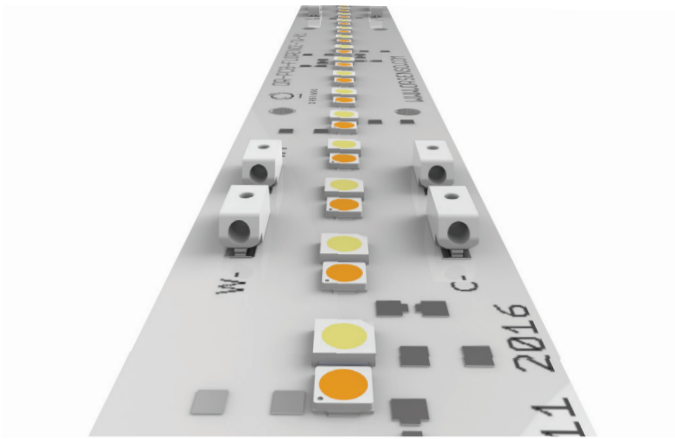
- Tunable white with the best configuration on the market.
- Superior performance - CRI 90 (min) CRI 95 (typical)
- 2200K - 6500K
- Metal core PCB for optimal thermal management
- Configurable with off-the-shelf optics, heat sinks and aluminum profiles
- Market leading LEDs
- Up to 50 TUNE's can be linked parallel @100mA, and 8 TUNE's @600mA
- Total 4576lm (both channels driven)
- LED spacing from 4mm and up to 11.75mm
- Ease of installation with optional double sided thermal tape.
- Special quick input connector as standard



\* Tested @85 ° see table 1 for the right configuration that suits your application

# TUNE - 48

Product datasheet



## TECHSPEC

### Absolute maximum ratings

Table 1. LED configuration

Configuration	channel	CCT (K)	CRI (min)	Current per channel (mA)		Luminous Flux (lm)		Watts @ 85 ° (W)		Efficacy min (lm/W)
				min	max	min	max	min	max	
2X24	WW	2200	90	100	600	518	2212	4	31	122
	CW	6500	90	100	900	324	2376	2	23	150
2X12	WW	2200	90	100	600	259	1106	2	16	122
	CW	6500	90	100	900	162	1188	1	12	150

Table 2. Absolute maximum ratings for Warm White

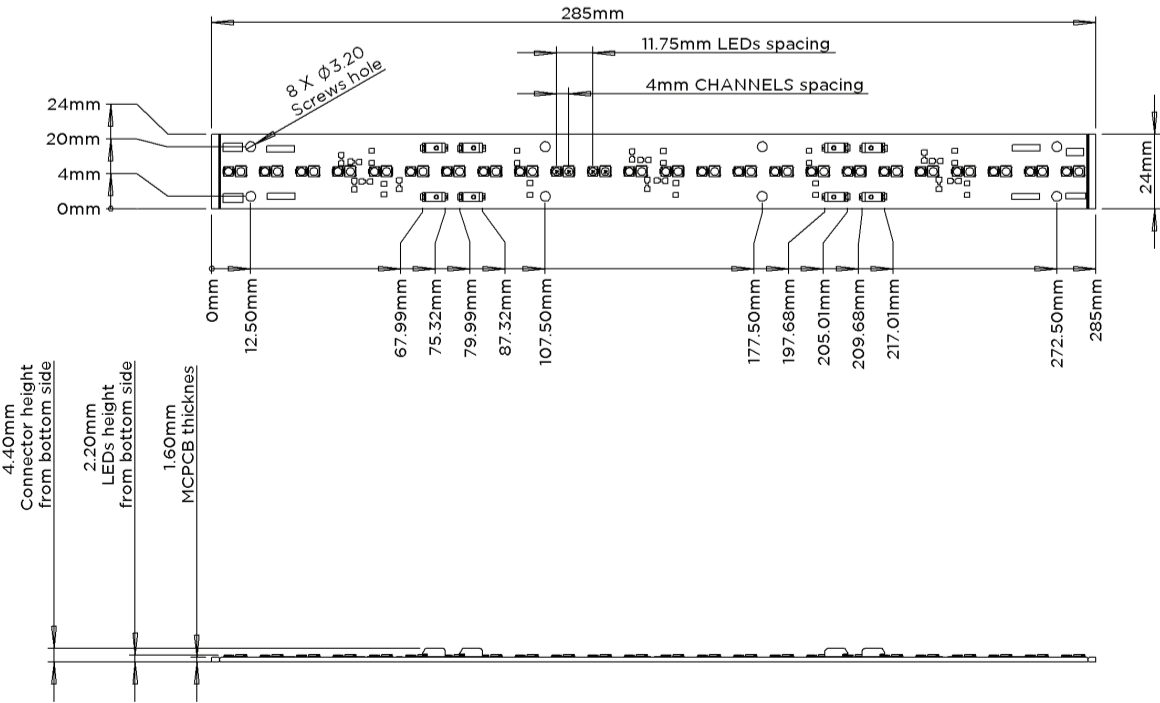
Parameter	Maximum performance	
	3 strings of 8 LED	6 strings of 4 LED
DC Forward Current	600 mA	1200 mA
DC Forward Voltage	52 VDC	26 VDC

Table 3. Absolute maximum ratings for Cool White

Parameter	Maximum performance	
	3 strings of 8 LED	6 strings of 4 LED
DC Forward Current	900 mA	1800 mA
DC Forward Voltage	26 VDC	13 VDC



## MECHANICAL DRAWING



\* Tested @85 ° see table 1 for the right configuration that suits your application

